

HILO, HAWAII

AL-756 (FAA)

LOC/DME I-TO	APP CRS	Rwy Idg	9800
110.7	259°	TDZE	38
Chan 44		Apt Elev	38

# ILS or LOC RWY 26

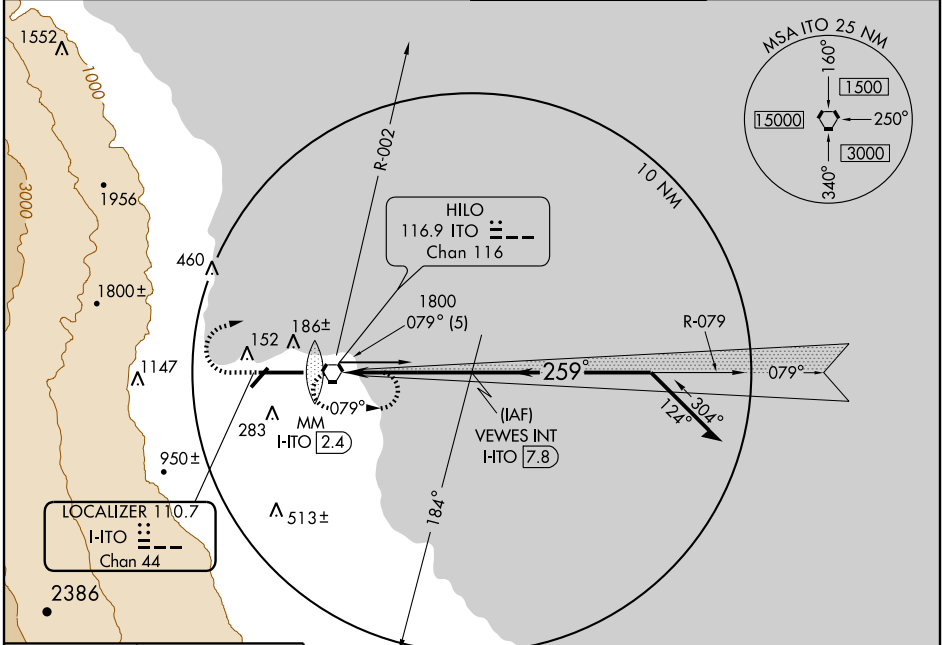
HILO INTL (ITO) (PHTO)

**⚠** Circling not authorized south of Rwy 8-26. For inoperative MALS increase S-LOC 26 vis to 1 mile all Cats. Inoperative table does not apply to S-ILS 26. ADF or DME required.

**MALS**  


**MISSED APPROACH:** Climb to 450 then climbing right turn to 3000 via ITO R-002 then direct ITO VORTAC and hold.

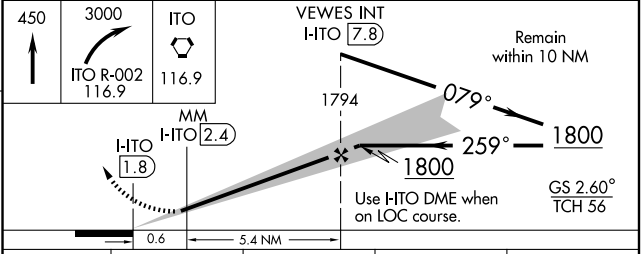
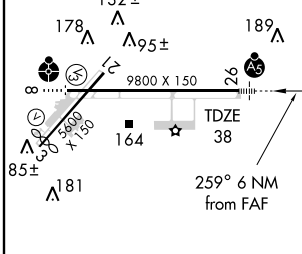
ATIS <b>126.4</b>	HILO APP CON <b>119.7 269.2</b>	HILO TOWER★ <b>118.1(CTAF) 263.1</b>	GND CON <b>121.9</b>
----------------------	------------------------------------	---	-------------------------



PAC, 27 AUG 2009 to 22 OCT 2009

PAC, 27 AUG 2009 to 22 OCT 2009

ELEV	38
------	----



REIL Rwy 3	MIRL Rwy 3-21	HIRL Rwy 8-26			
FAF to MAP 6 NM					
Knots	60	90	120	150	180
Min:Sec	6:00	4:00	3:00	2:24	2:00

CATEGORY	A	B	C	D
S-ILS 26	288-1		250 (300-1)	
S-LOC 26	420-¾		382 (400-¾)	
CIRCLING	500-1	462 (500-1)	500-1½ 462 (500-1½)	700-2 662 (700-2)

HILO, HAWAII  
 Amdt 12B 09071

19°43'N-155°03'W

# HILO INTL (ITO) (PHTO)

## ILS or LOC RWY 26